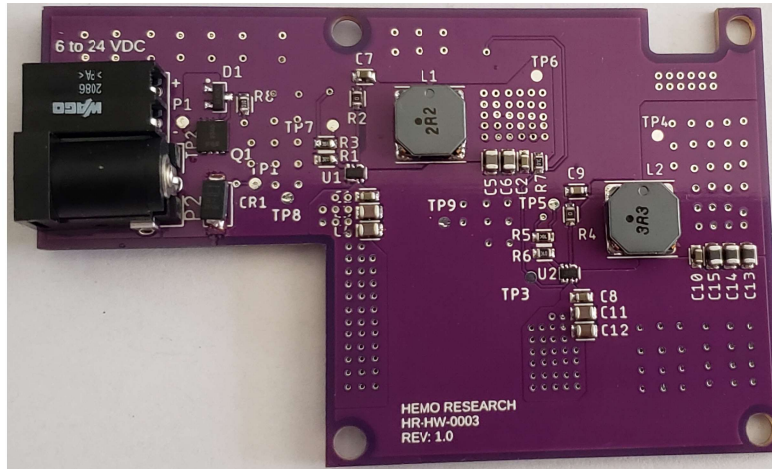


Industrial Power Module



| | |
|-------------------------------|--|
| Input Voltage | 6 – 24 VDC Reverse Polarity Protection |
| Input Interface #1 | 2-Wire Spring-Loaded Terminal Block |
| Input Interface #2 | 5.5 mm Barrel Jack Center Pin Positive |
| Output Voltage #1 | 3.3 VDC, 2A @ 20° C 3.3 VDC, 1A @ 85° C |
| Output Voltage #2 | Enabled 5.0 VDC, 2A @ 20° C Enabled 5.0 VDC, 1A @ 85° C |
| Switching Frequency Output #1 | 1.2 MHz |
| Switching Frequency Output #2 | 1.2 MHz |
| Load Regulation Output #1 | ±0.25% |
| Load Regulation Output #2 | ±0.20% |
| Line Regulation Output #1 | ±0.20% |
| Line Regulation Output #2 | ±0.20% |
| Operating Temperature | -25° C to +85° C |
| Physical Dimensions | 3.2" x 2.0" |